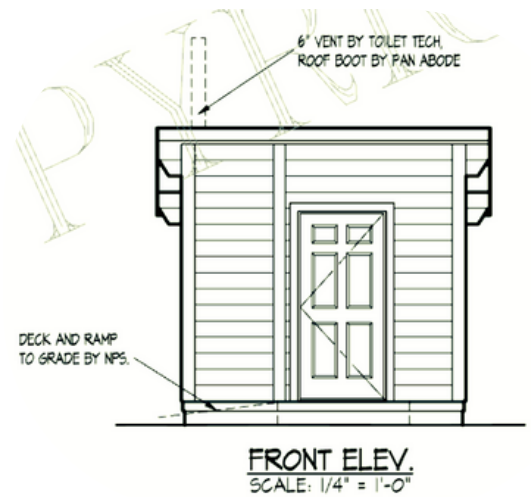


The Alaska

Regular & ADA Sizes



Glacier Bay National Park, AK
Single Stall - ADA - 48" DCV - Decompose



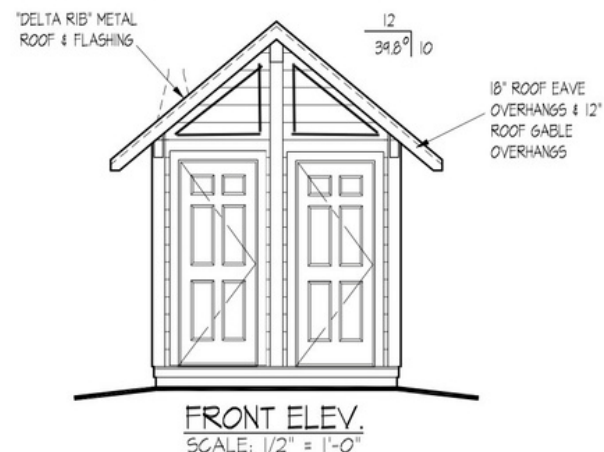
Full Set of Assembly Instructions and
Full Set of Site Prep Instructions Provided

Our monitoring has shown that this system is reliable and requires only minimal maintenance. The park is currently purchasing more of these units to replace the old pit systems within our backcountry.

*Mark Ortega, Facilities
Glacier Bay National Park, Alaska*

The Alaska is a strong, attractive, and full 4-season toilet building, making it a great choice for backcountry and frontcountry sites with winter use or high snow load. The structures are prefabricated, container / flat packed, making assembly do-able by local contractors or skilled employees. Use this building to replace your pit toilets, portable toilets, smelly vault toilets, or WAG bags program.

- Fully prefabricated in sections
- All pieces can be lifted by 1 or 2 people
- Assembles in under five days (with 2 people)
- Pan Abode T&G structural cedar lumber system
- 100-300 lb/sqft snow load
- Shed or gable roof designs
- Single or double stall size options
- Regular or ADA (wheelchair accessible)
- 3-4 month average lead time



Also Available: The Teton
Double Stall - Gable Roof